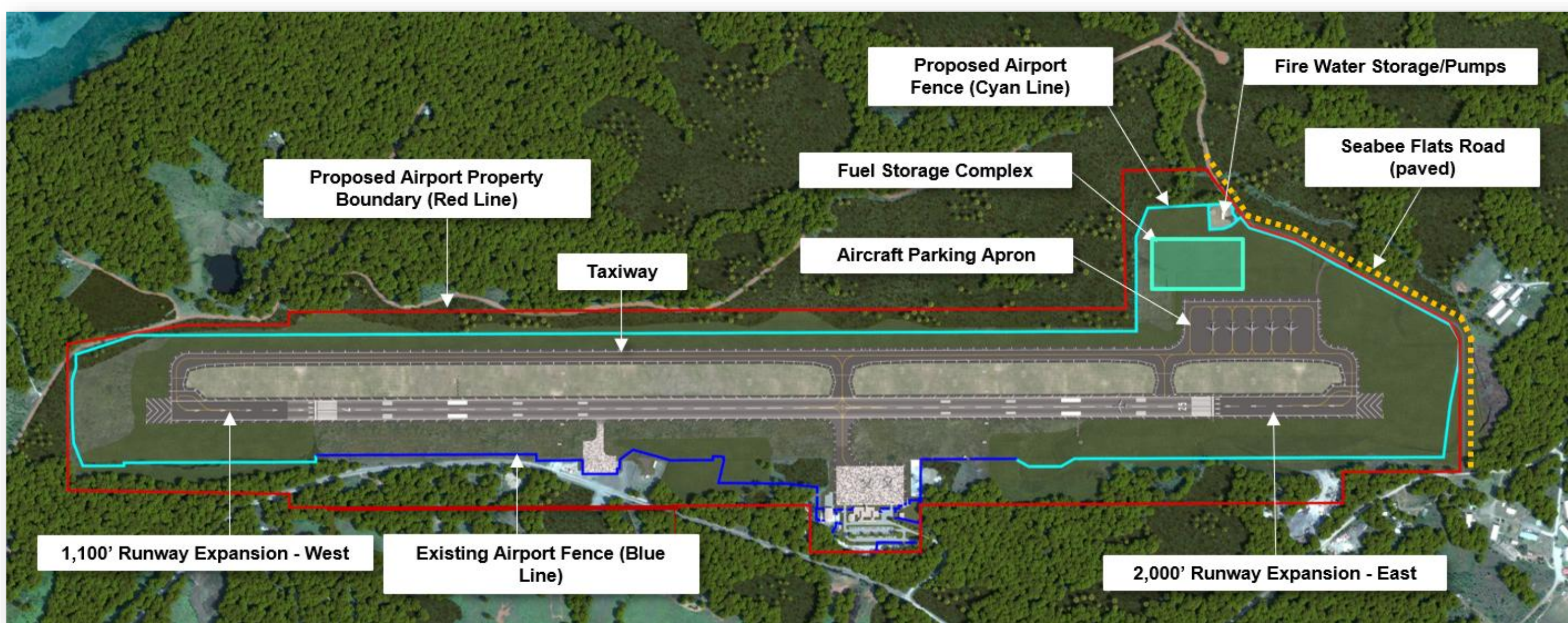


# Airport and Road Improvements

## Mon'og ko shikojo nge kanawoo

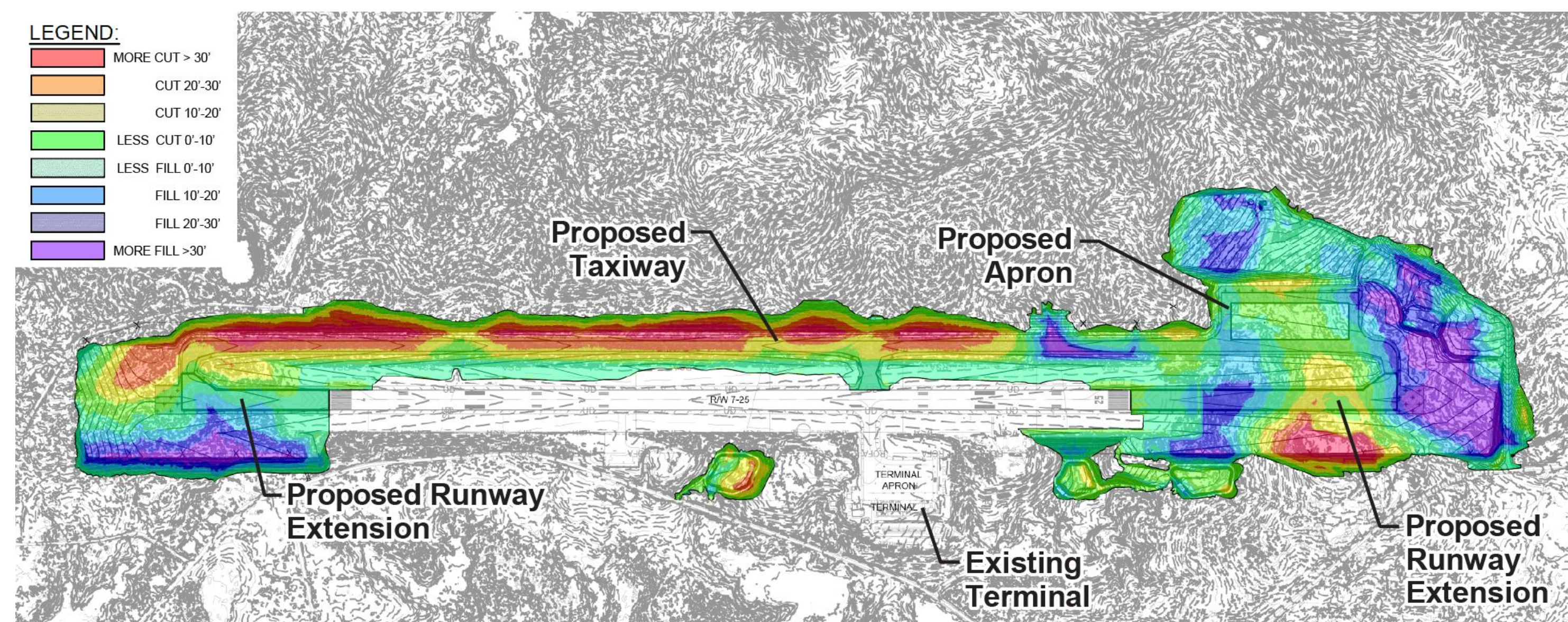
### Proposed Airport Layout

*Shikojo nge athap ko rogon nge marweliy*



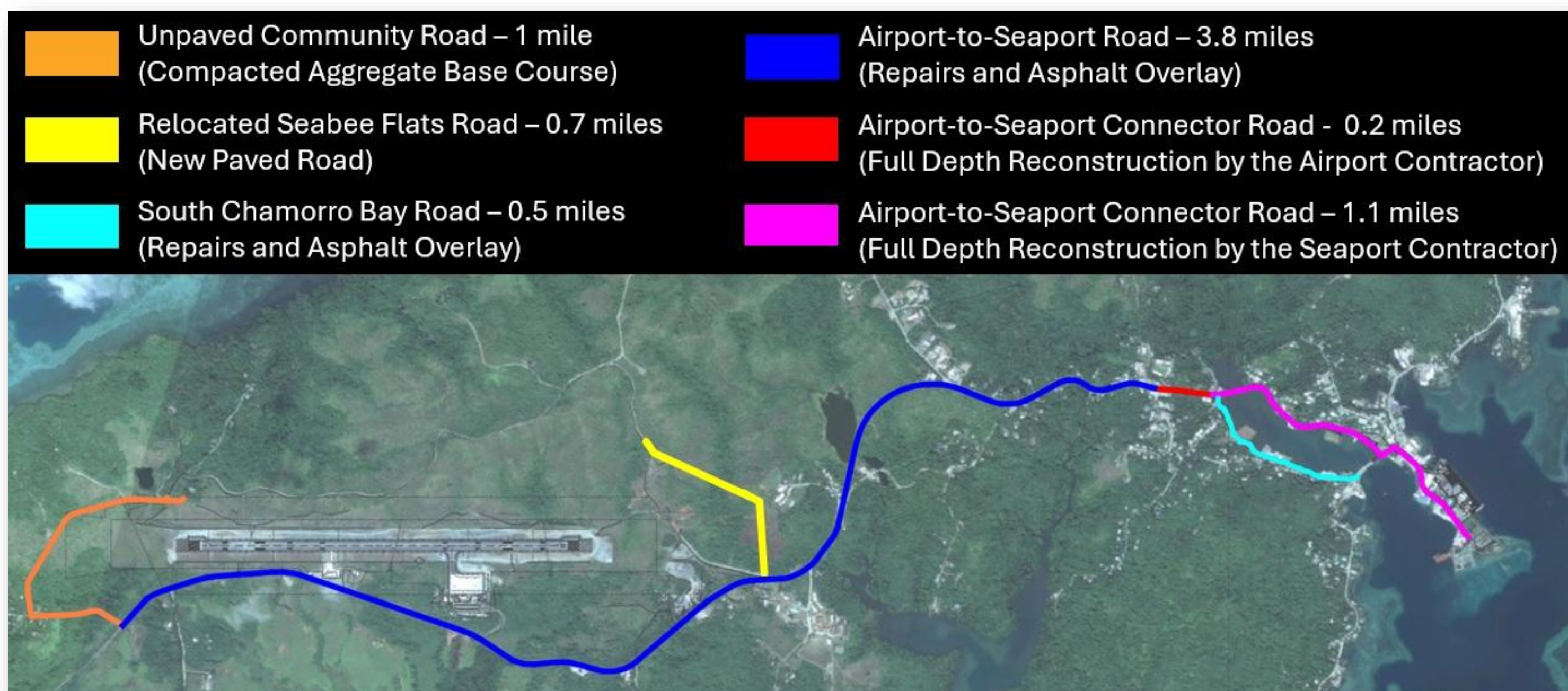
### Proposed Cut and Fill Areas

*Athap ko rogon nge taareb daken ea buut*



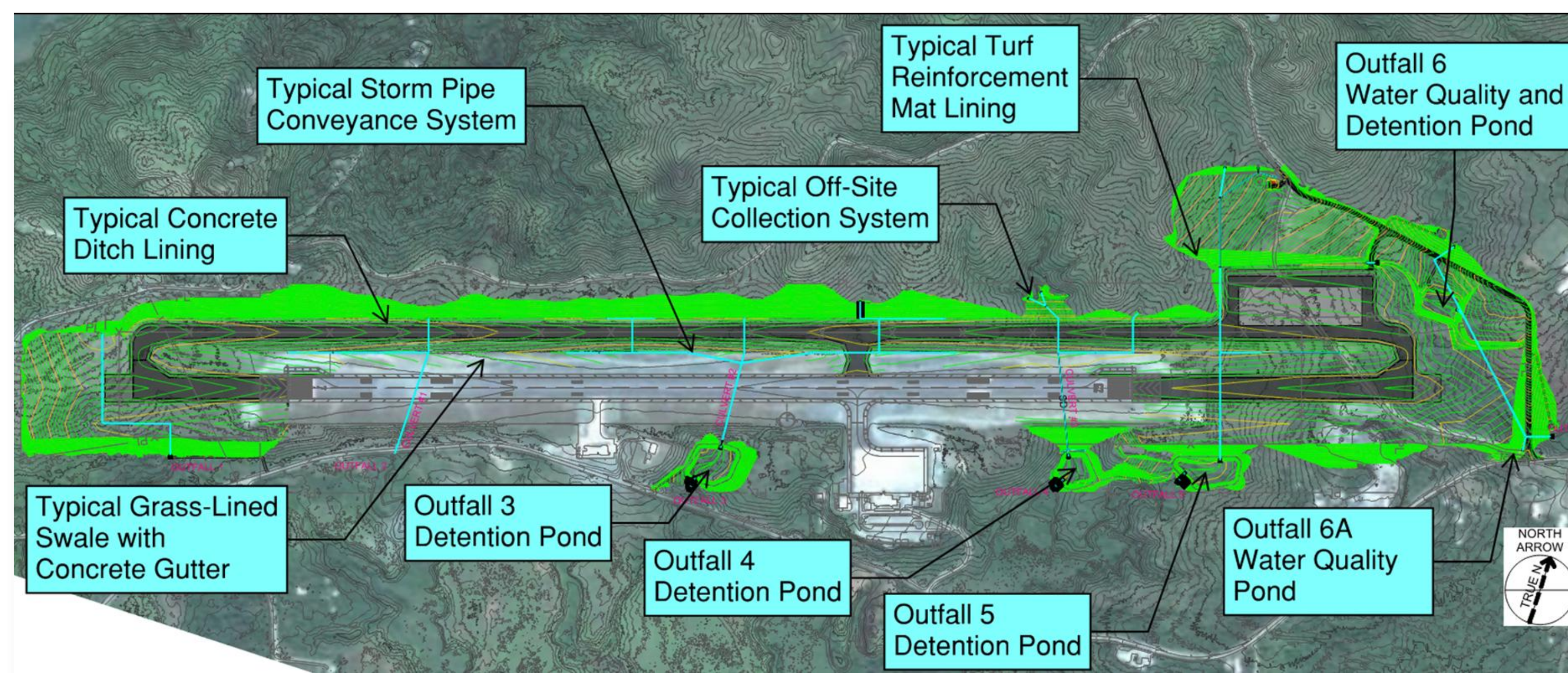
### Proposed Road Improvements

*Athap ko mon'og ko kanawoo*



### Proposed Site Drainage Plan

*Athap ko Wol' ea raen*



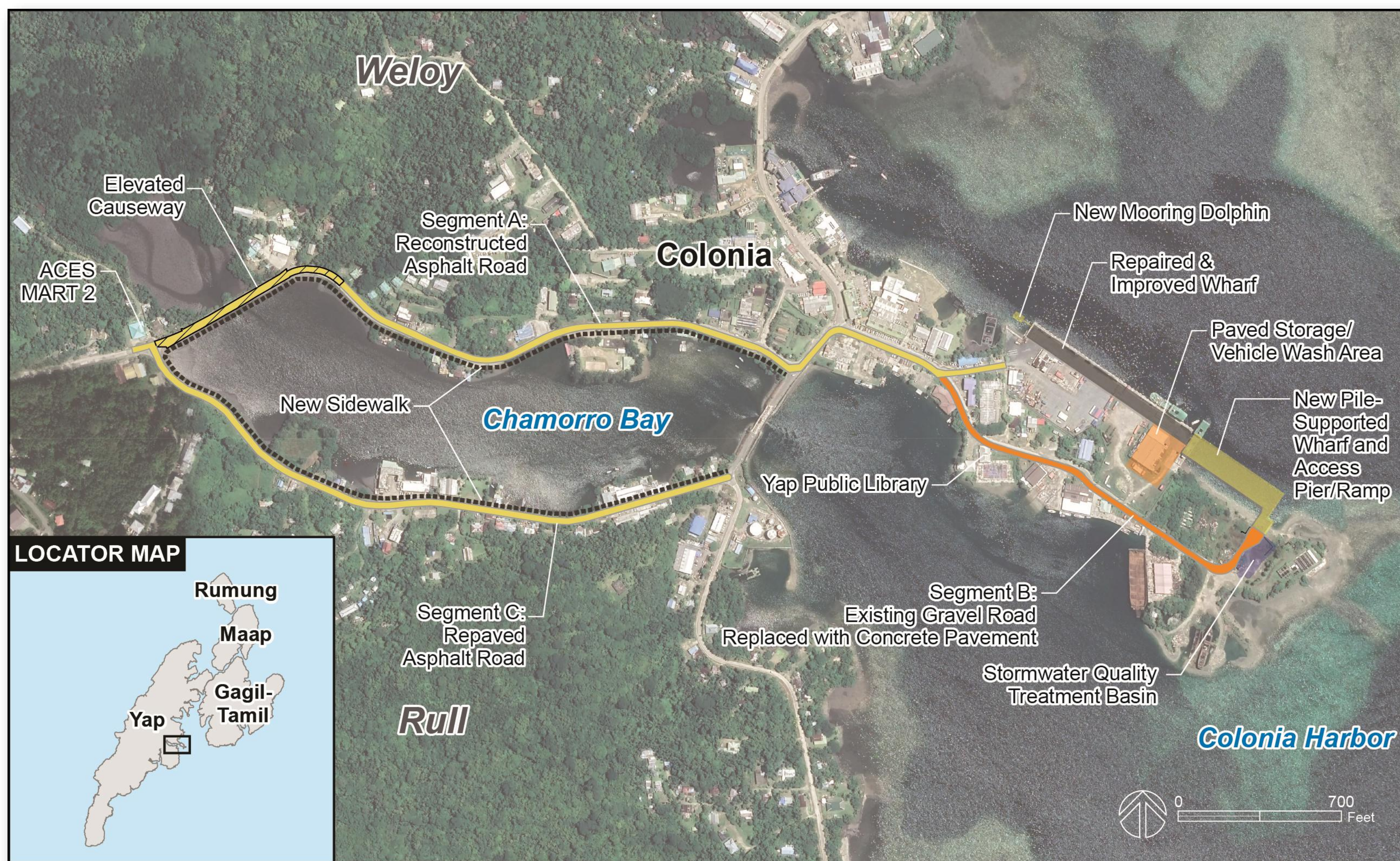
Your Voice Matters! Submit comments to [www.nepa.navy.mil/yapeis](http://www.nepa.navy.mil/yapeis)

Laniyan ea yoor ea ba gaa' fan! Ra baa ea tin ni gabadag ni ngan nang fa baa' ea duwer rom mag pii ko [www.nepa.navy.mil/yapeis](http://www.nepa.navy.mil/yapeis)



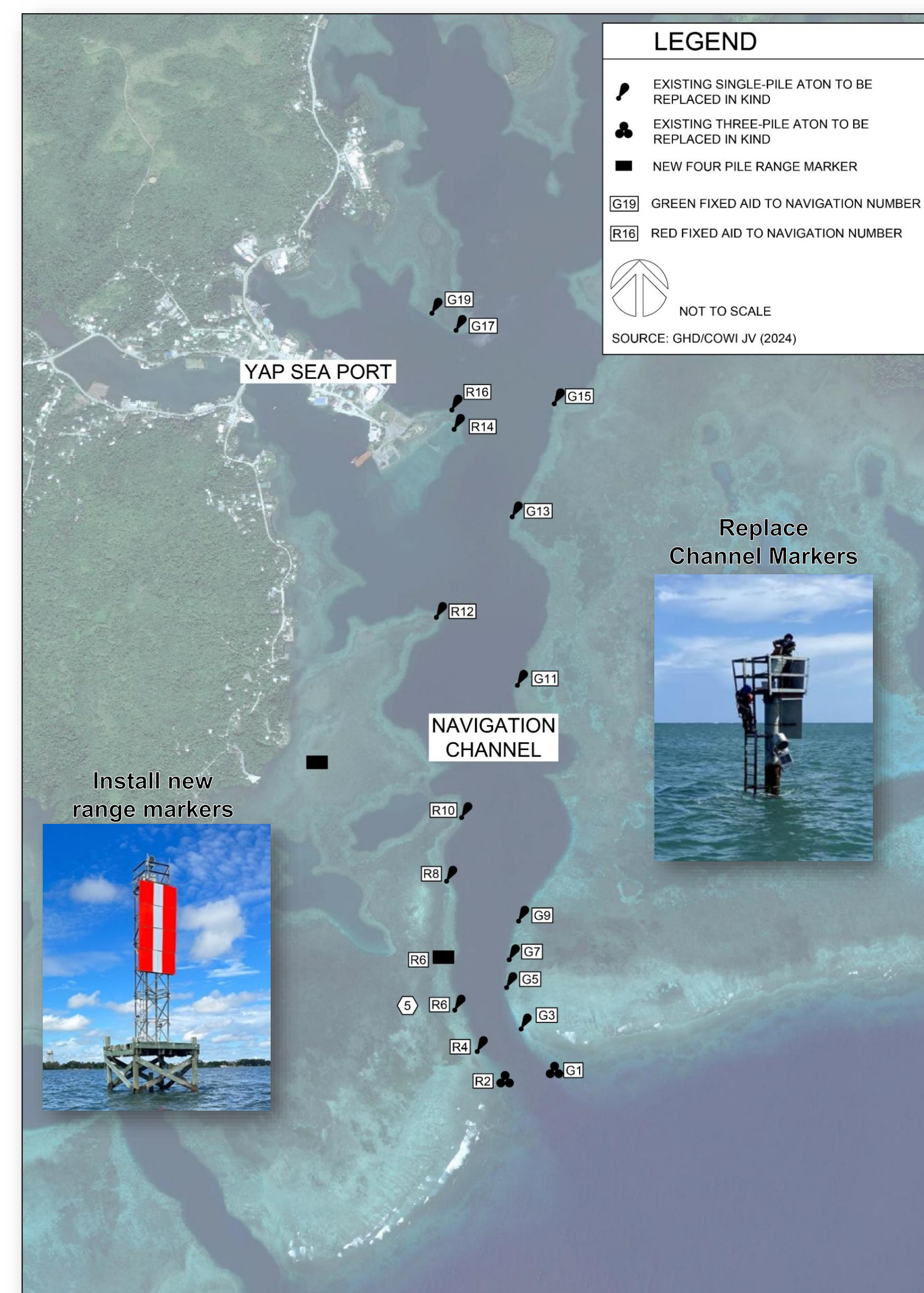
# Seaport Improvements Mon'og nag ea gampek

## Wharf and Road Improvements Mon'og nag e gampek nge kanawo



## Aids to Navigation Improvements

### Pinen ni ra ayuweg e pow ko dubchol nge wa'en e barkow



Your Voice Matters! Submit comments to [www.nepa.navy.mil/yapeis](http://www.nepa.navy.mil/yapeis)

Laniyan ea yoor ea ba gaa' fan! Ra baa ea tin ni gabadag ni ngan nang fa baa' ea duwer rom mag pii ko [www.nepa.navy.mil/yapeis](http://www.nepa.navy.mil/yapeis)

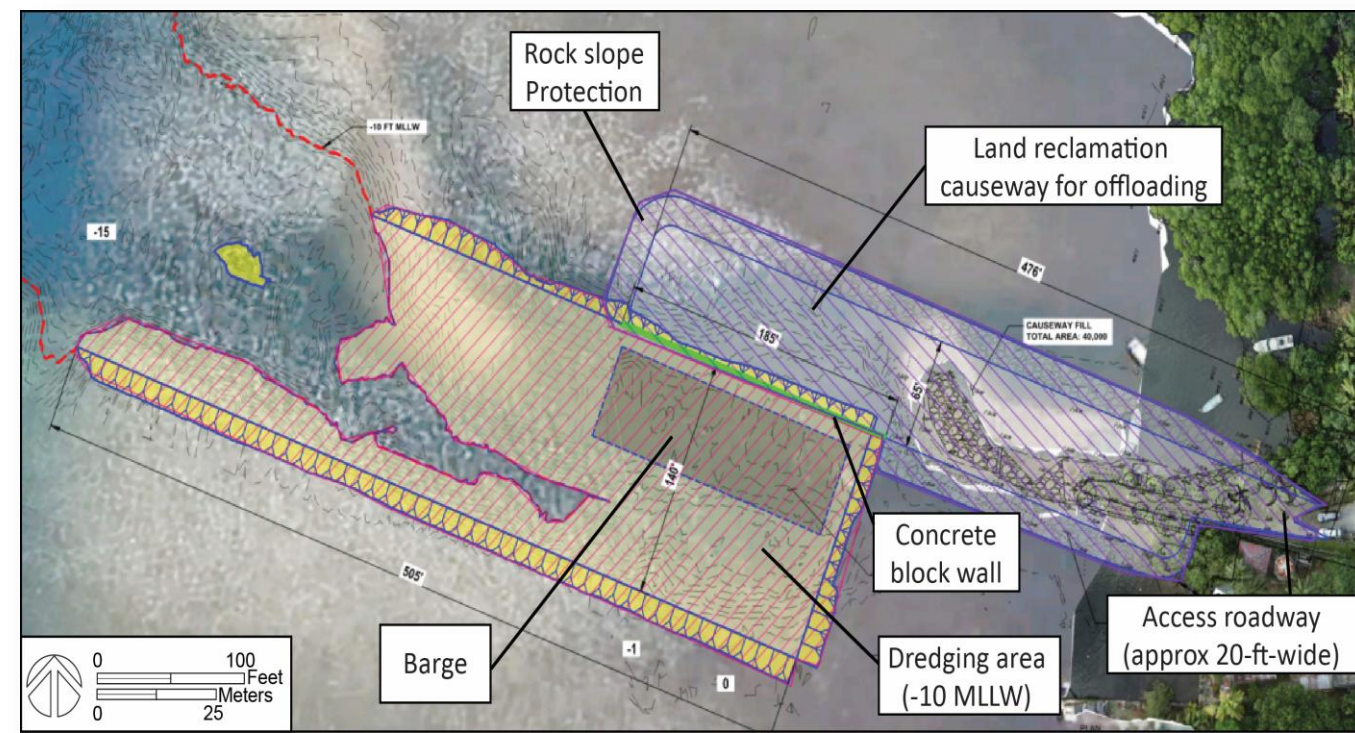


# Dredge Overview

## Rogone marwel u dubchol

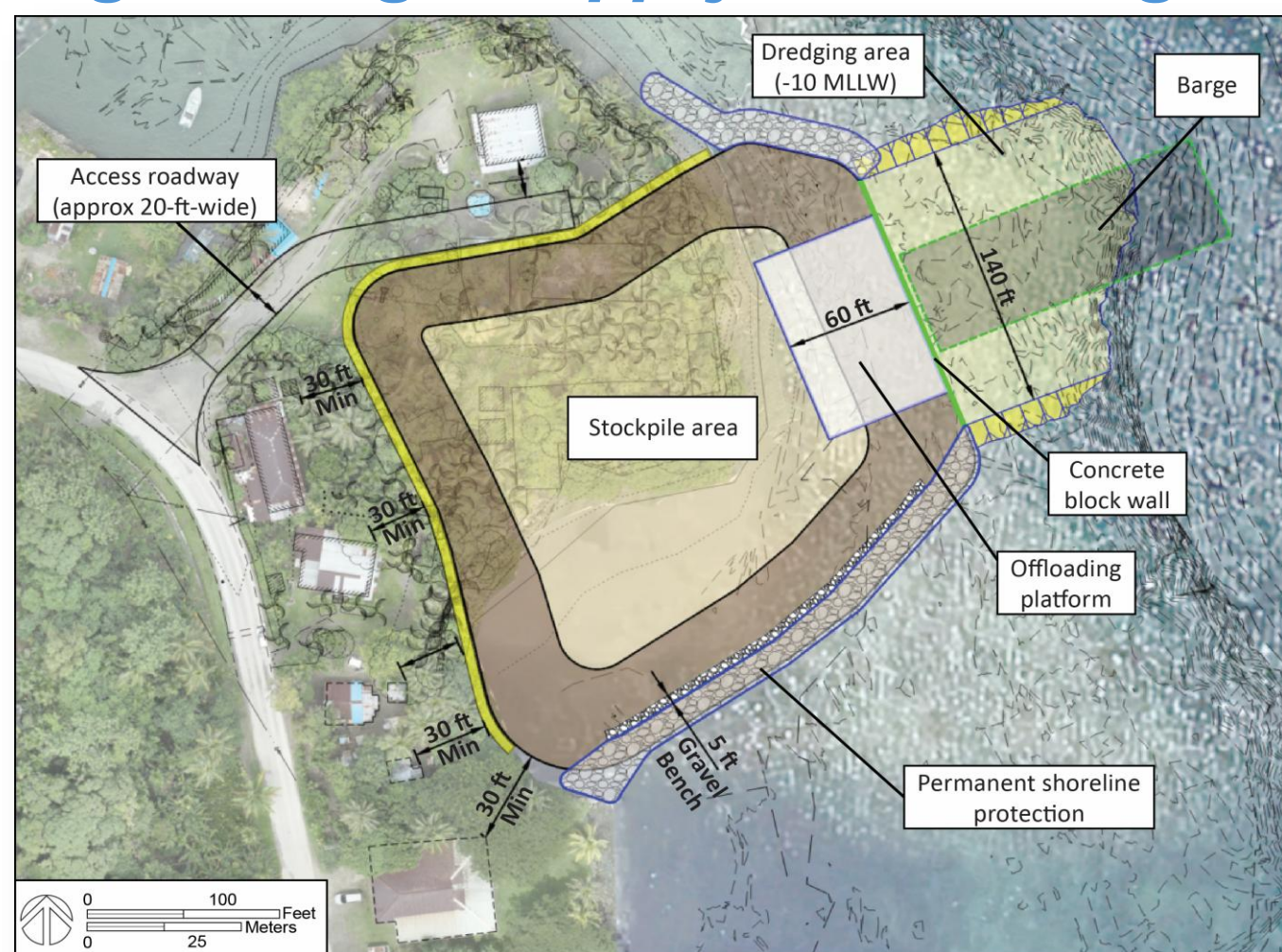
### Tamil Beneficial Reuse

*Ngin ni nge taq piyu Tamil e lugoch ngaq*



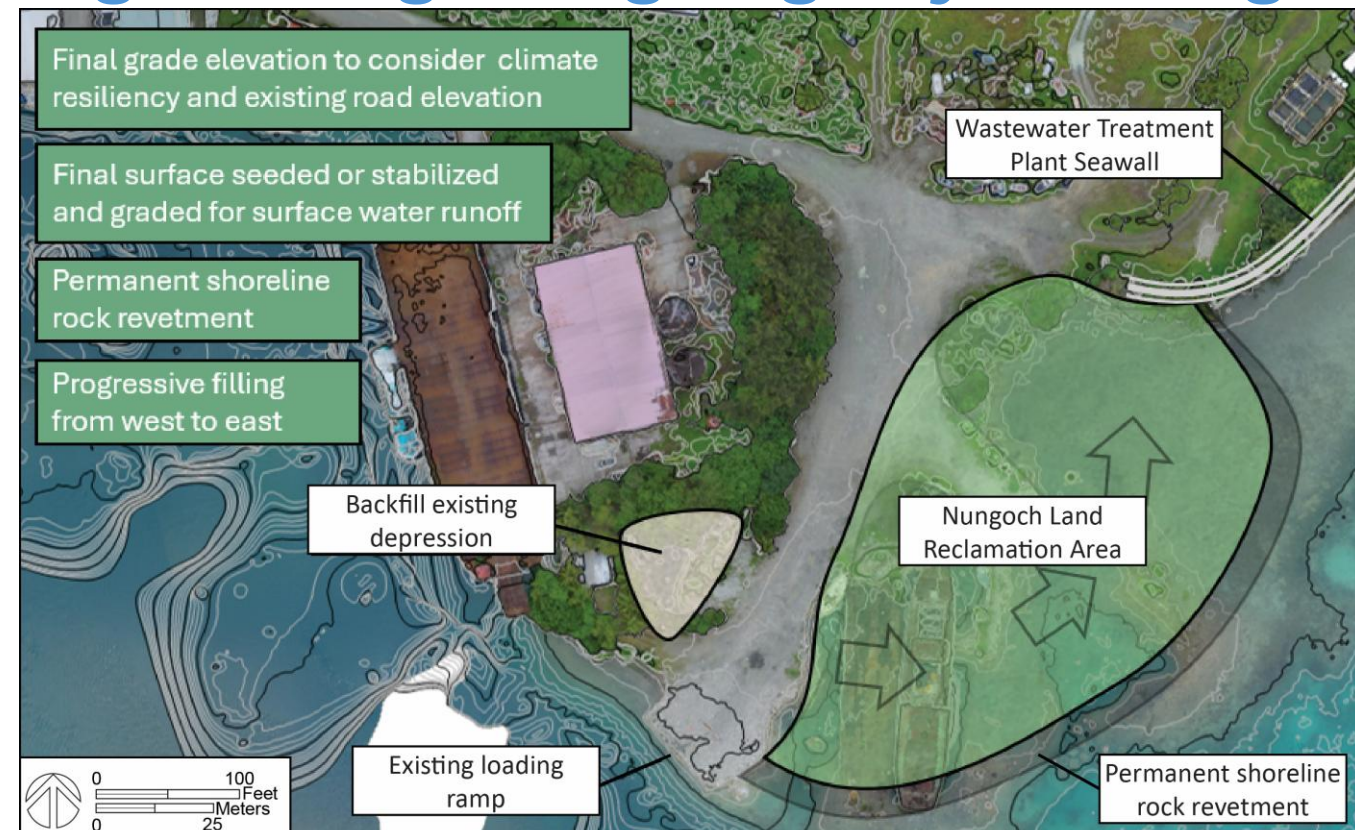
### Rull Beneficial Reuse

*Ngin ni nge taq piyu Rull e lugoch ngaq*



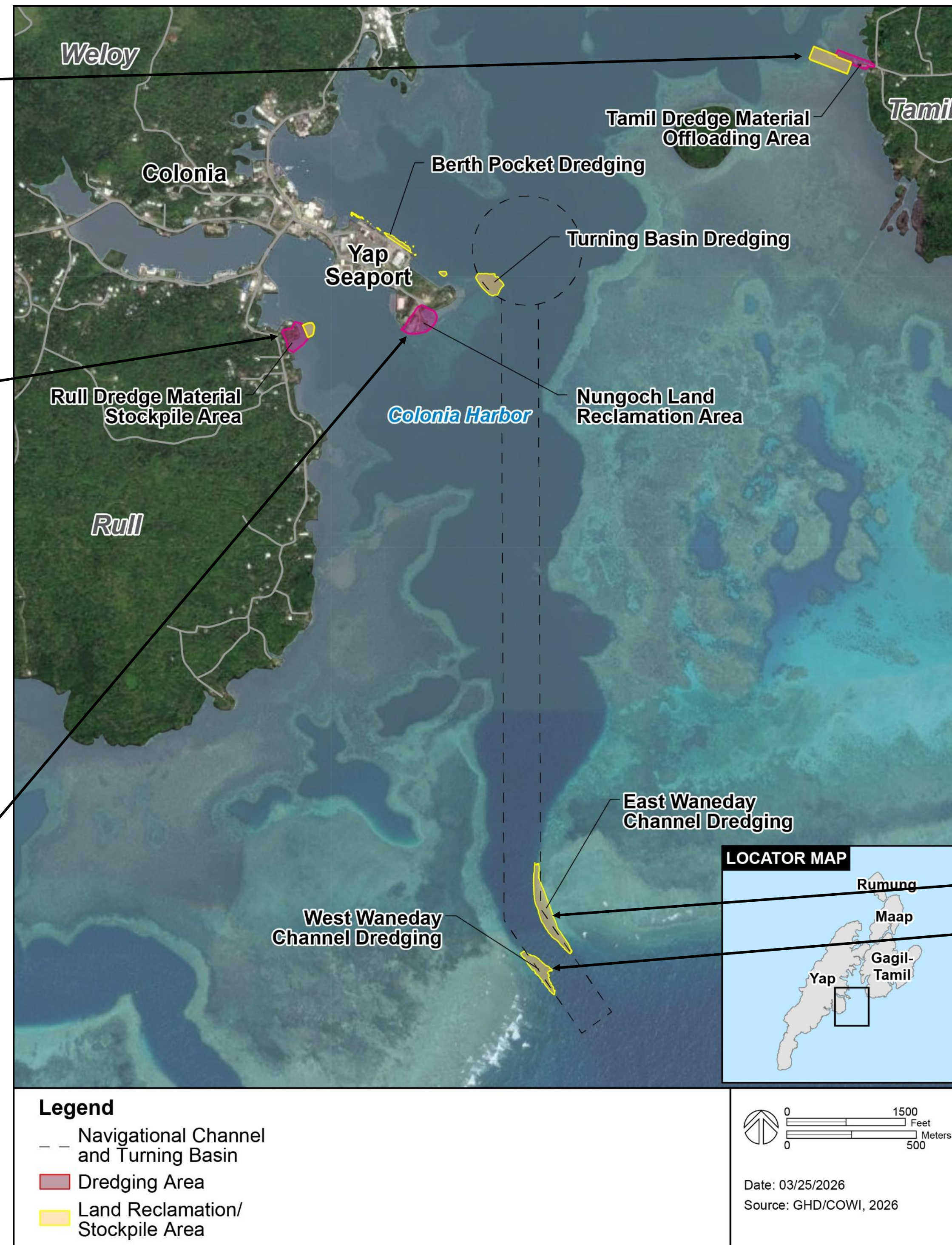
### Nungoch Land Reclamation

*Ngin ni ngan ngongoliy u Nungoch*



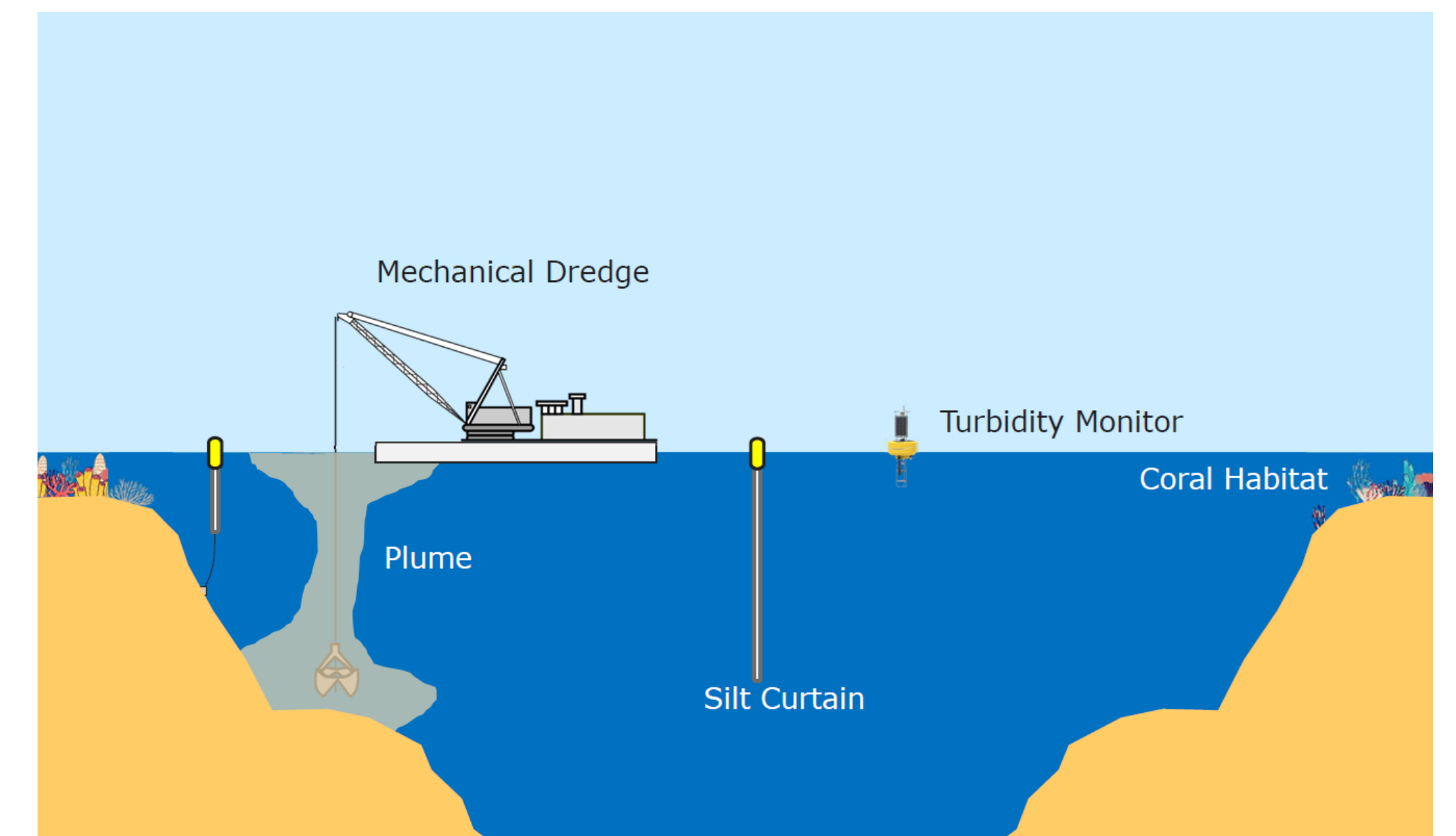
### Dredging and Land Reclamation/Stockpile Locations

*Marwel u dubchol nge yungi binaw ni ra murwel u daken*



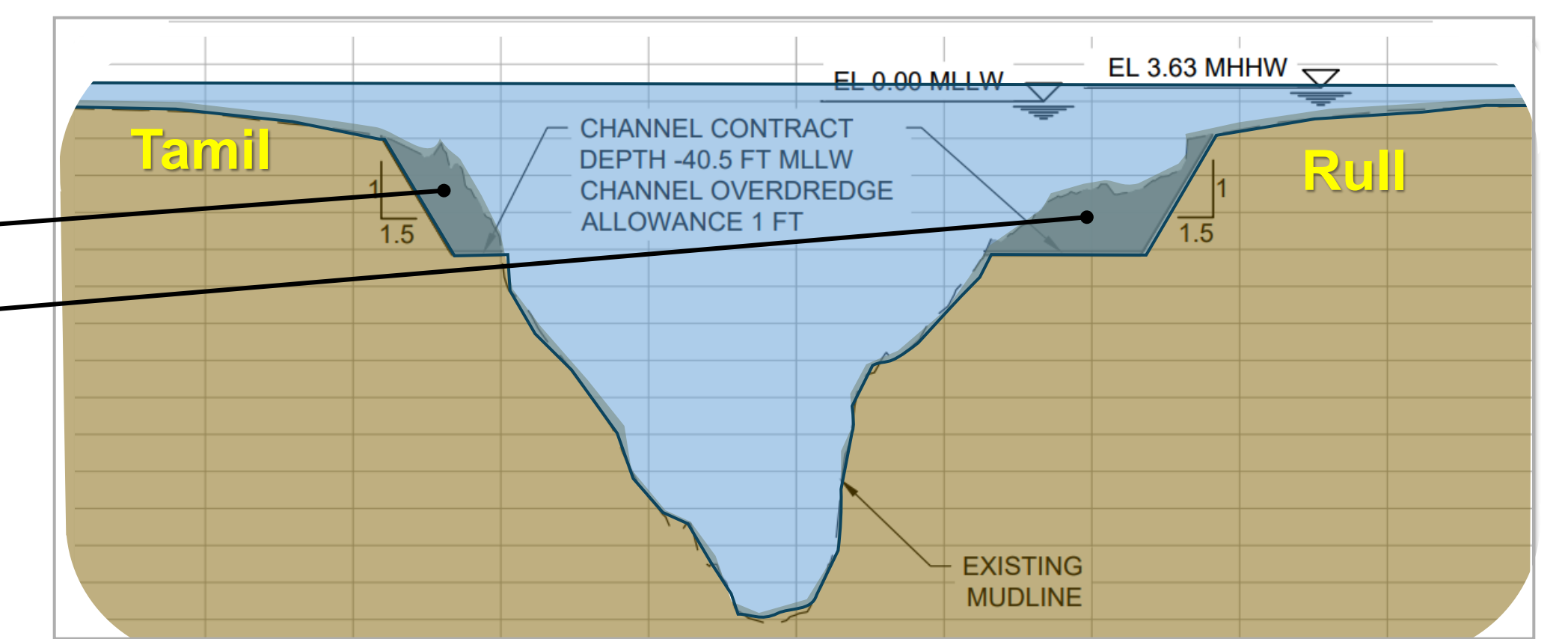
### Dredging Process and Best Management Practices

*Rogone mker dubchol ni ngan taq nge rogone murwel ni thaabi bfel*



### Waneday Channel Dredging

*Mker dubchol U Waneday*



Your Voice Matters! Submit comments to [www.nepa.navy.mil/yapeis](http://www.nepa.navy.mil/yapeis)

Laniyan ea yoor ea ba gaa' fan! Ra baa ea tin ni gabadag ni ngan nang fa baa' ea duwer rom mag pii ko [www.nepa.navy.mil/yapeis](http://www.nepa.navy.mil/yapeis)

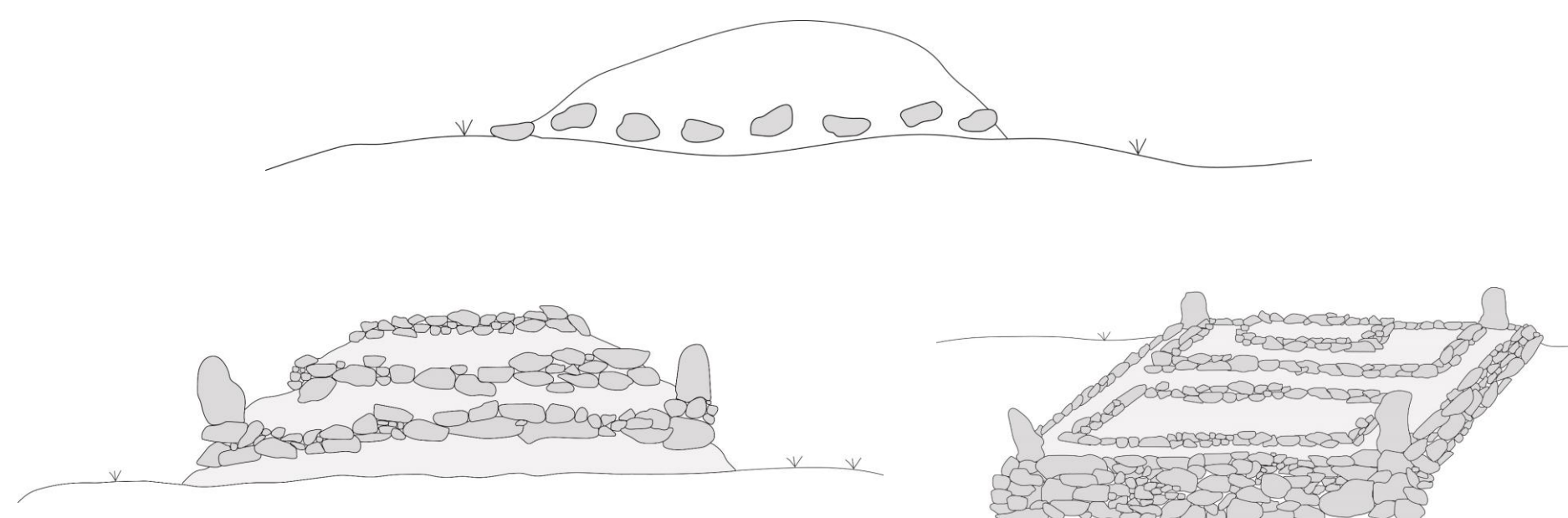


# Cultural Resources

## Falngin ea yalen nge par u waab

### Sacred or Religious Uses

*Yungi nen nib tabgul*



### Historic Sites and Landmarks

*Yung i nen niba chipin*



### Archaeological Sites

*Taliw*



### Significant Adverse Impacts

*Tin banen ni rayog ni ra kireb*

- Impacts to graves and other cultural resources at the Airport  
*Ra kireb nag e mlang ne yam nge buginen nib gaa fan ko yalen nibay u taaben e shikojo*
- Land acquisition at the airport would impact customary land ownership  
*Binaw ni yira fek ni ngan murwel u daken e ra thil e chaan tafan*
- Shipwreck in the Waneday Channel dredging area  
*Barkow ni ra kireb fa yira ligil nag ko ggin ni yibe ker e dubchol riq u Waneday*

### Best Management Practices

*Rogon ni Ngan Murwel ni Thaabi Bfel*

- Consultation with the Yap State Historic Preservation Officer  
*Yibe mogopuruy ngak e gothon e murwel ko Yap Historic Preservation Office*
- Cultural resources training  
*Yibe fil margaagen e pinen u Waab nib gaa fan ko yalen nu Waab*
- Archaeological monitoring  
*Bay e girdii nib skul ko Archaeology ni murwel rok ni nggi yaliy rogone murwel ni yibe taq*
- Avoidance if possible  
*Yibe gay rogon ni yigoo tin banen ni ri dabiog ni dabin rrin e ir e yira rrin. Ra ba reb e murwel ni rayog ni bgaa thibngin ma yira gay rogon ni dabin rrin*
- Resource Documentation  
*Ra un yoloy margaagen gubin banen ni yimaa fnaa*



Your Voice Matters! Submit comments to [www.nepa.navy.mil/yapeis](http://www.nepa.navy.mil/yapeis)

Laniyan ea yoor ea ba gaa' fan! Ra baa ea tin ni gabadag ni ngan nang fa baa' ea duwer rom mag pii ko [www.nepa.navy.mil/yapeis](http://www.nepa.navy.mil/yapeis)

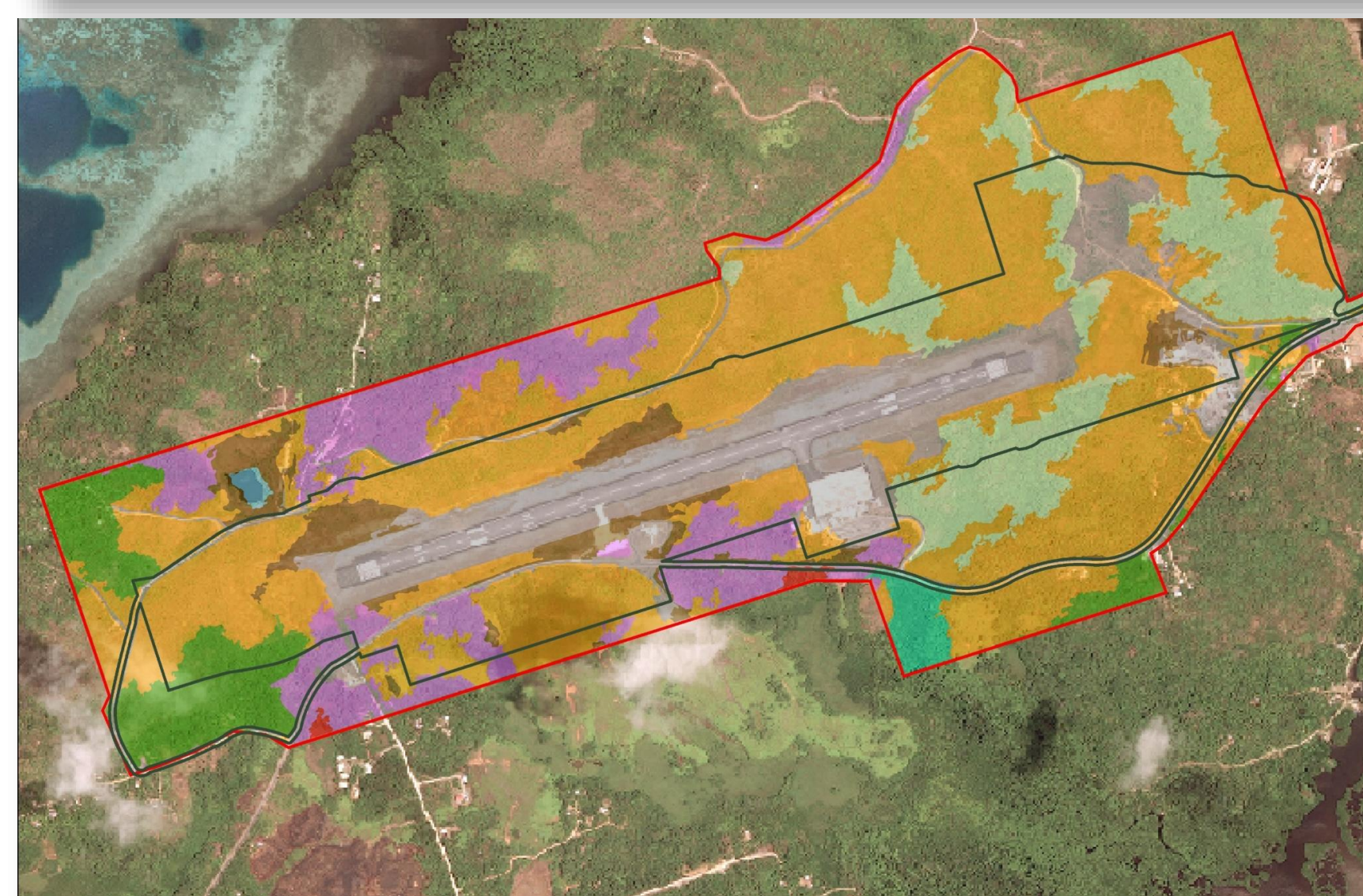
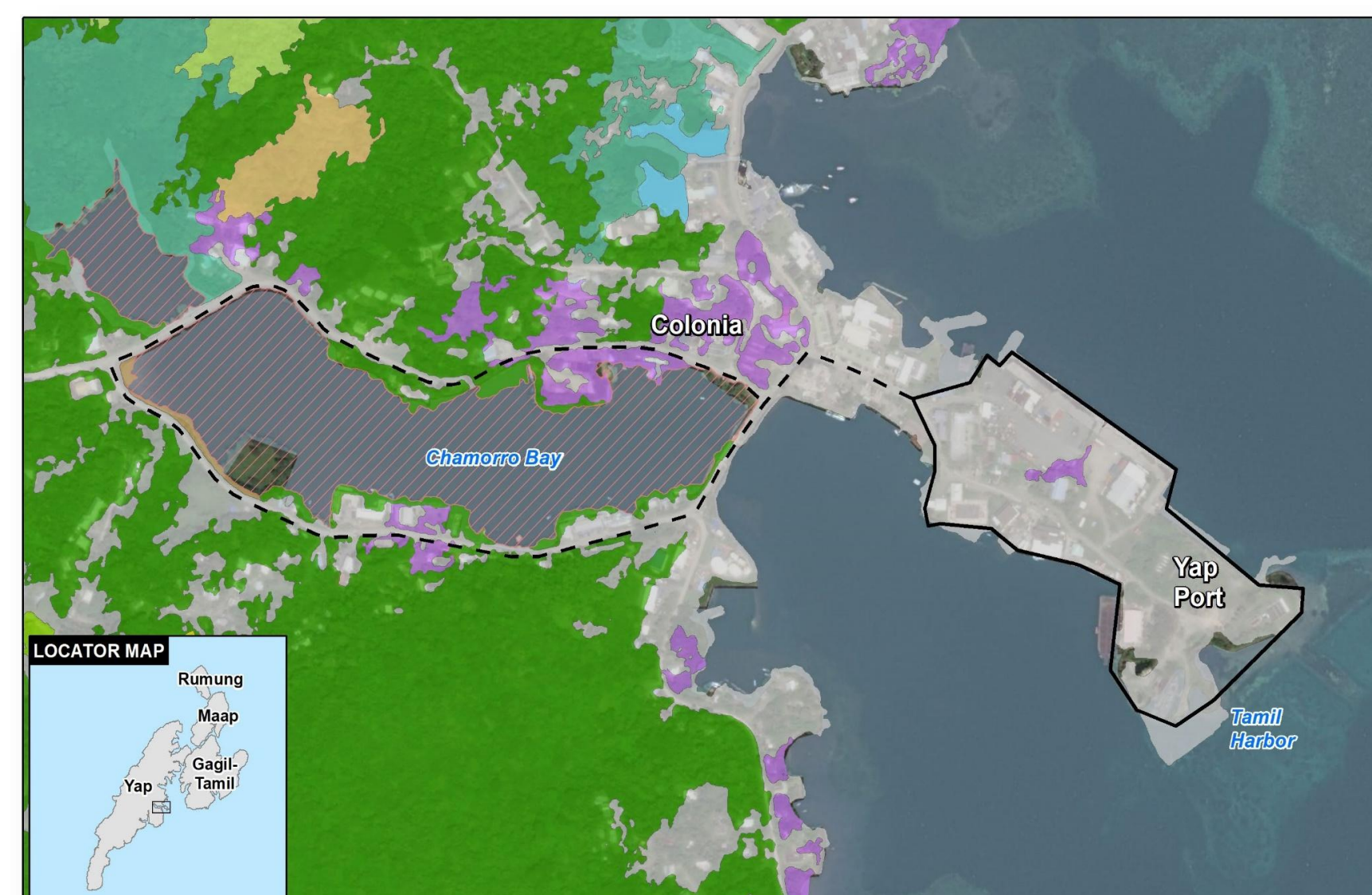


# Terrestrial Biological Resources

## *Daken e binaw*

### Vegetation and Land Cover Maps

*Fol ko woldug nge dakene binaw*



Project Area / Nginen ni ngan marweliy	Mangrove Forest / Mailil
Survey Area / Yungi nen ni ngan foleg u arow	Marsh / Mariw
Chamorro Bay Linear Survey / Fol ni thingar taa' u kanawoo ko Chamorro Bay	Savanna or Shrub Grass / Flang
Agroforest / Woldug nge garger	Urban Cultivated / Donguch
Barren / Ted	Urban Built-up / Mo'nog donguch
	Upland Forest / Laway
	Water / Raen



### Potential Best Management Practices

*Wa'en nge rogon ea marwel*

- Erosion Control such as sediment control logs, erosion control blankets, and detention ponds  
*Boch rogoni ayweg ea buut ni dabi yan ni wod ea chobog, ara yoror, ara wo'l ea ran*
- Biological Monitors to protect birds, bats, and other species  
*Rogon boch ea marwel ni ngea ayweg ea yafas nge gamanman*



### Construction Impacts

*Yagagan e murwel*

- Less than significant adverse impacts on vegetation and wildlife  
*Baga fan ni ngan nang nib gel e kireb/mogothgoth nra tay ko gekiy nge kuboch e yafas u daken e buut*

### Protected Species Consultation

*Mogopuruy nib fan ko yafas nu maday nge arow ni bay motochiyalen ni dabin liq*

In accordance with the Standard Operating Procedures between DoW and FSM/YAP, consultation on the project's impacts on protected species is in progress



Standard Operating Procedures (SOP) ni ke puruy nag e DoW, nge piyuu FSM, nge piyuu Waab e ir e yibe fol riq ni aramfan ni yibe mogo puruy ngak e girdii nu Waab u marngaagen e yafas nu maday nge aruw ni bay motochiyalen ni dabin liq

### Post-Construction Impacts

*Yagagan Tomren e Murwel*

- Significant adverse impacts on special status species (Yap flying fox)  
*Baga'fan ni ngan nang nib gel e kireb/mogothgoth ni ra tay e tiney e murwel ko maglaw nge kuboch e archeq*
- Less than significant adverse impacts on vegetation and other wildlife  
*Baga'fan ni ngan nang ni danri gel e kireb/mogothgoth ni ra tay ko gekiy nge gamanman*



Your Voice Matters! Submit comments to [www.nepa.navy.mil/yapeis](http://www.nepa.navy.mil/yapeis)

Laniyan ea yoor ea ba gaa' fan! Ra baa ea tin ni gabadag ni ngan nang fa baa' ea duwer rom mag pii ko [www.nepa.navy.mil/yapeis](http://www.nepa.navy.mil/yapeis).



# Biosecurity

Minimizing risk of Non-Native Species

# Rogon i ayweg ea yafas

## Pre-border Procedures

*Tin somon banem ni ngan rin ni ngan ayweg yafas u maday nge arow*

- Cleanliness and treatment standards for aggregate and sand
- *Motochiyal ni be dugliy fna bi'ech mab felrogon ii muruwliy e yan' nge pinen ni yibe fana' ko pich nge simen*
- Inspections and certifications  
*Ra un fleg ii yaliy gubin banen ma ra bmit e banen ma yira pii babyoren ni nge micheg fan/rogon ni ngan fek*
- To reduce risk of brown tree snake, additional inspections for cargo originating/transiting from Guam  
*Kubaa e motochiyal ni kan dugliy ni rib sor fan ko chugum ni be yib u Guam nga daken e nam nu Waab ni bochan ni nge mus fna achig e yoyowol ko chugum ni nge yib ni bay e brown tree snake riq nga Waab*



Black sock disease, *Pyrrhoderma noxium*



Little fire ant (LFA), *Wasmannia auropunctata*

## Potential Best Management Practices

*Wa'en nge rogon ea marwel ni Thaabi Bfel*

- Biosecurity Plans  
*Rogoni I ayweg ea yafas*
- Environmental trainings for staff  
*Fan'ow ko yafas u maday nge arow ni fan ngakea chon ea marwel*
- Equipment rinse downs  
*Thi ngan luknag gubin ea til'in ea marwel*
- Inspections, monitoring, and reporting  
*Nga'un fleg ii yaliy gubin banen ma nga unnog gubin banen ni kan guq*



Red imported fire ant, *Solenopsis invicta*



Coconut rhinoceros beetle (CRB), *Oryctes rhinoceros*

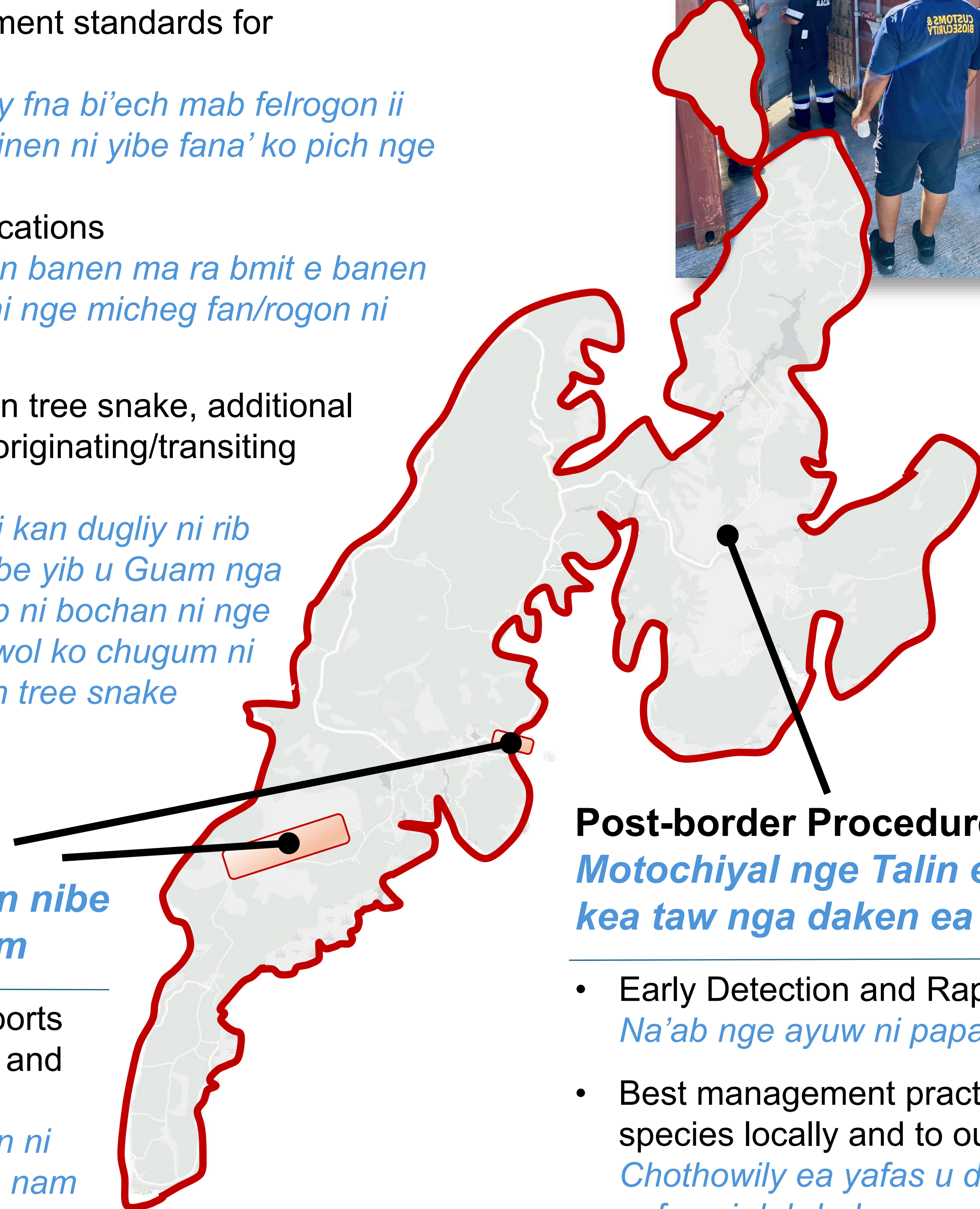


Brown treesnake (BTS), *Boiga irregularis*

## Border Procedures

*Motochiyal ko pii nen nibe yib nga daken ea nam*

- Cargo inspections at ports coordinated with FSM and Yap officials  
*Tin ngan rrin ko pii nen ni kea taw nga daken ea nam*



## Post-border Procedures

*Motochiyal nge Talin ea marwel ni fan ko chugum ni kea taw nga daken ea nam*

- Early Detection and Rapid Response  
*Na'ab nge ayuw ni papay*
- Best management practices to reduce the spread of invasive species locally and to outer islands  
*Chothowily ea yafas u daken ea nam mea lich ea garger nge yafas ni dubdad*



Your Voice Matters! Submit comments to [www.nepa.navy.mil/yapeis](http://www.nepa.navy.mil/yapeis)

Laniyan ea yoor ea ba gaa' fan! Ra baa ea tin ni gabadag ni ngan nang fa baa' ea duwer rom mag pii ko [www.nepa.navy.mil/yapeis](http://www.nepa.navy.mil/yapeis).



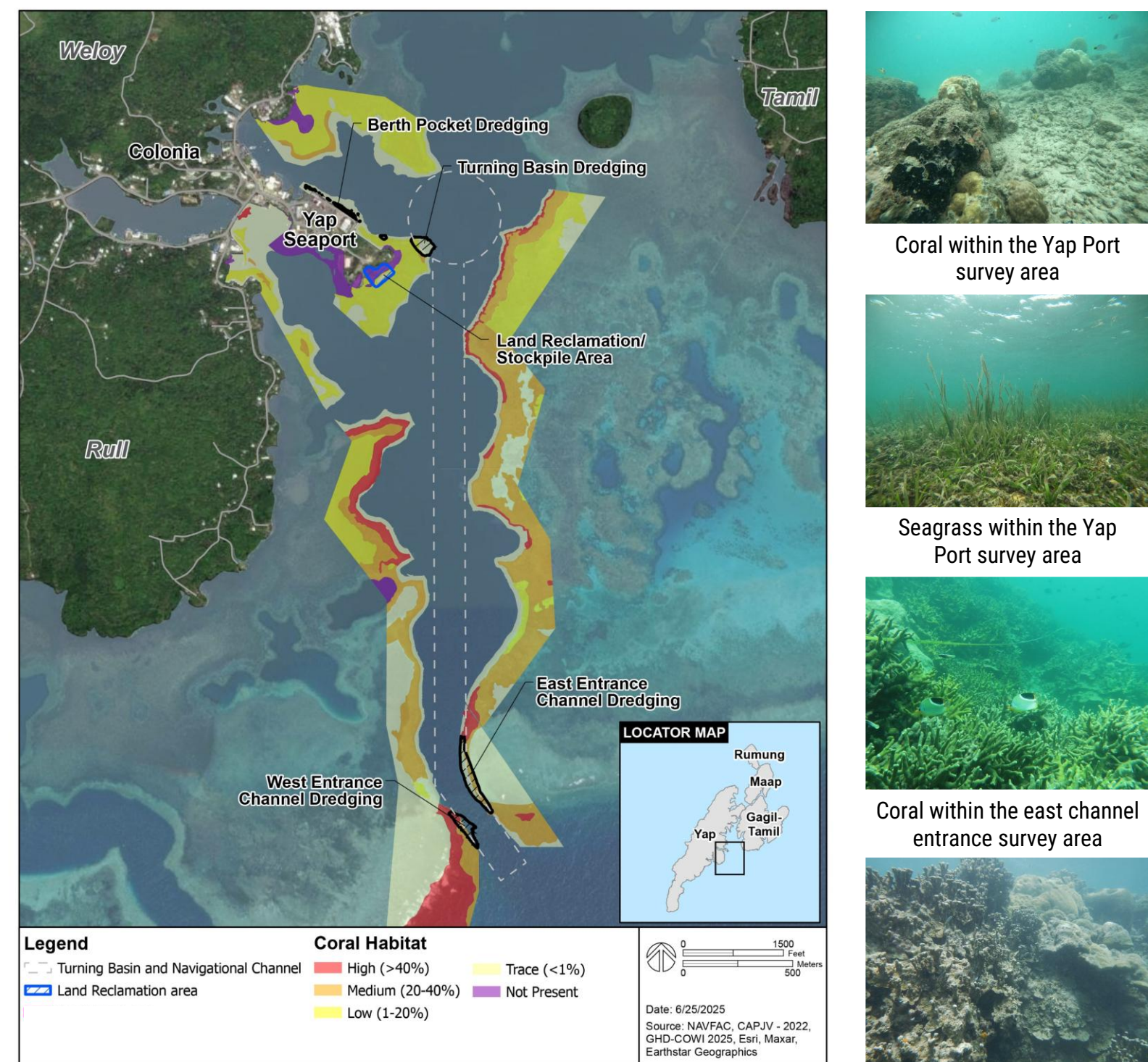
# Marine Biological Resources

## Falngin ea daey

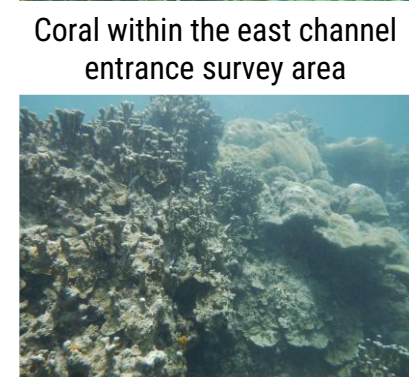
### Coral Reefs and Fish Habitats

#### Survey Results

*Lugoch nge yafas u maday*



Coral Habitat Survey Results and Proposed Dredging Areas (in black)



Coral within the west channel entrance survey area

### Traditional Fishing Grounds

*Tag'il ea fitaa*



Photo by: Marc Nadon



Photo by: Marc Nadon

### Resources Affected

*Pinen ni yima fanaa ni ra thil rogon*



Dieter Kudler - www.yap-pacific.com



mares.com

### Protected Species Consultation

*Mogopuruy nib fan ko yafas nu maday nge arow ni bay motochiyalen ni dabin liq*



Public Domain image



Photo by: Oceaniamazon

In accordance with the Standard Operating Procedures between DoW and FSM/YAP, consultation on the project's impacts on protected species is in progress

*Standard Operating Procedures (SOP) ni ke puruy nag e DoW, nge piyuu FSM, nge piyuu Waab e ir e yibe fol riq ni aramfan ni yibe mogo puruy ngak e girdii nu Waab u marngaagen e yafas nu maday nge aruw ni bay motochiyalen ni dabin liq*

### Potential Best Management Practices

*Kaboch ea marwal ni fal ni ngan rrin*

### Construction Impacts

*Yagagan e murwel*

- Significant adverse impacts on coral  
*Bigel ni ra kireb nag e murwel e lugoch*
- Less than significant adverse impacts on marine vegetation, fish, non-coral benthic invertebrates, marine mammals, and turtles  
*Yug daani gel ni ra kireb nag e murwel e yafas nu maday ni wod e lem, nig, gamanman nu maday, nge wel*

### Post-Construction Impacts

*Yagagan Tomren e Murwel*

- Less than significant adverse impacts on marine biological resources  
*Yug daani gel ni kireb nag e pinen ni yira rrin u tomren e murwel e yafas nu maday*

- Silt Curtains  
*Yoror ko ae'r*

- Biological Monitors and Shutdown Zones  
*Ngan lingeg ea ngi nen niybe marwel rii ni fan ko yafas*

- Turbidity Monitors  
*Ngan taleg ea ae'r*

- Avoid major coral and giant clam spawning periods  
*Ngan gilaf u napan niybe tutugul ea lugoch nge nig*



Your Voice Matters! Submit comments to [www.nepa.navy.mil/yapeis](http://www.nepa.navy.mil/yapeis)

Laniyan ea yoor ea ba gaa' fan! Ra baa ea tin ni gabadag ni ngan nang fa baa' ea duwer rom mag pii ko [www.nepa.navy.mil/yapeis](http://www.nepa.navy.mil/yapeis).

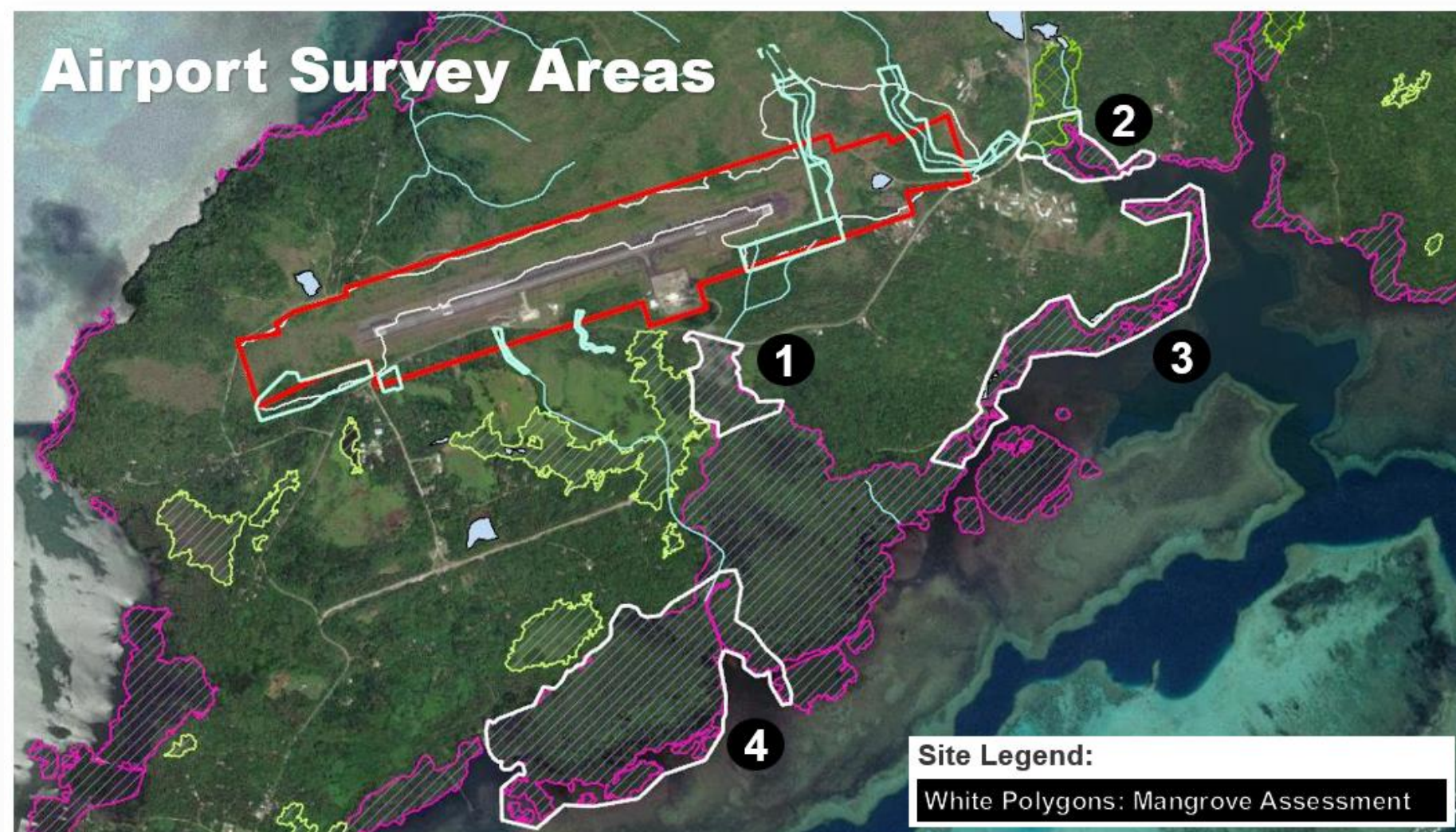


# Water Resources

## Ngin ni bay e raen riq

### Mangroves

#### Miil



### Impacts

#### Yagagan e Murwel

- No direct impacts to mangroves near the Airport, minor impacts at Rull and Tamil dredge disposal sites  
*Dariy banen ni ra bucheg e mker dubchol ko mliil u taabene shikojo. Rayog ni baq nochi banen nibachig ni ra kir u Rull nge Tamil ko ggin ni ngan kunuy e lugoch ngaq*
- BMPs would avoid and/or minimize potential for downstream effects  
*Ba rogone murwel ni kan dugliy ni nge mus fna achig nag fa nge dugliy rogon ni kireb*

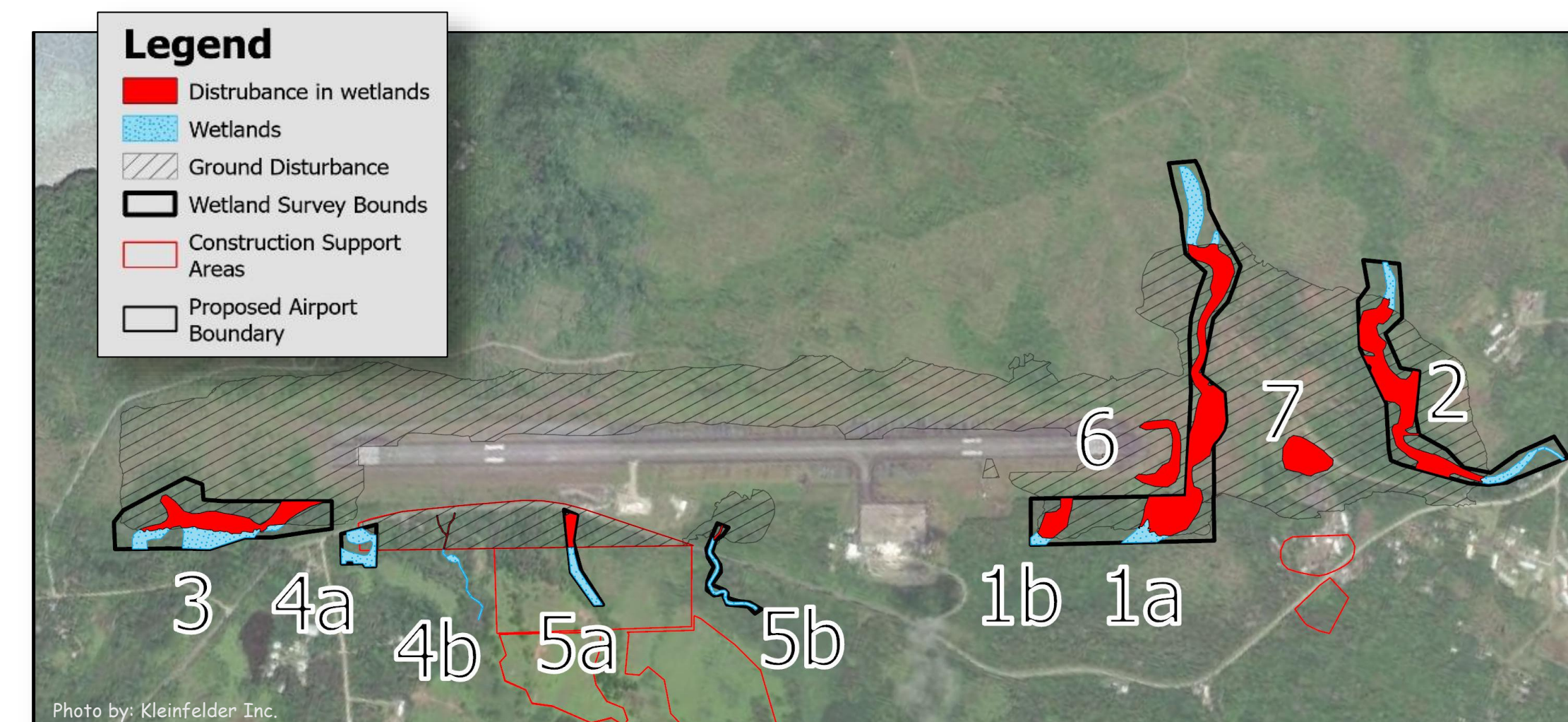
### Best Management Practices (BMPs)

#### Rogon ni Ngan Murwel Ni Thaabi Bfel

- Erosion and Sediment Control Plan  
*Rogon ni ngan dugliy e raen ni nge dabki fek e buut*
- Stormwater Pollution Prevention Plan  
*Rogon ii dugliy e raen ko nuw ni gaq ni dabki kireb nag bugi banen*
- Stormwater detention and water quality basins  
*Rogon ii choy/ayuweg e raen ko nuw ni gaq*

### Wetlands

#### Mariw



### Impacts

#### Yagagan e Murwel

- Unavoidable impacts to ~22 acres of wetlands at the Airport  
*Bay e nen rayog ni ra thil ara kireb nag e binaw u taabene shikojo. Go'napan 22 (riliw nge laagruw) e acre e binaw ni ra thil ara kireb ni bochan e murwel ni ngan taq u shikojo*

### Mitigation

#### Talpen e Nen ni Ra thilyeg e Binaw

Potential wetland restoration area  
*Mariw/muut*



### Marine Waters

#### Maday



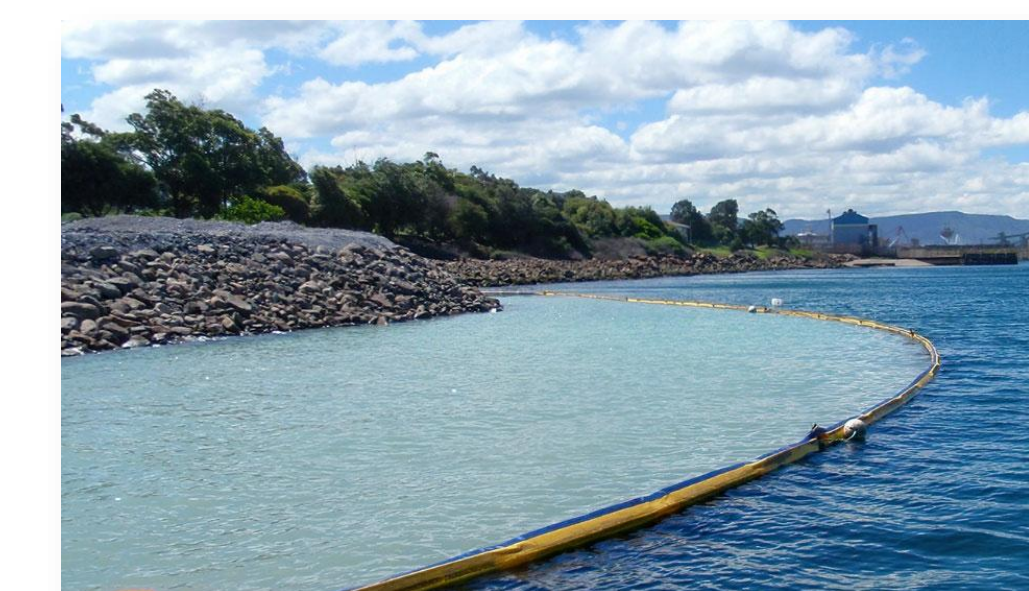
### Impacts

#### Yagagan e Murwel

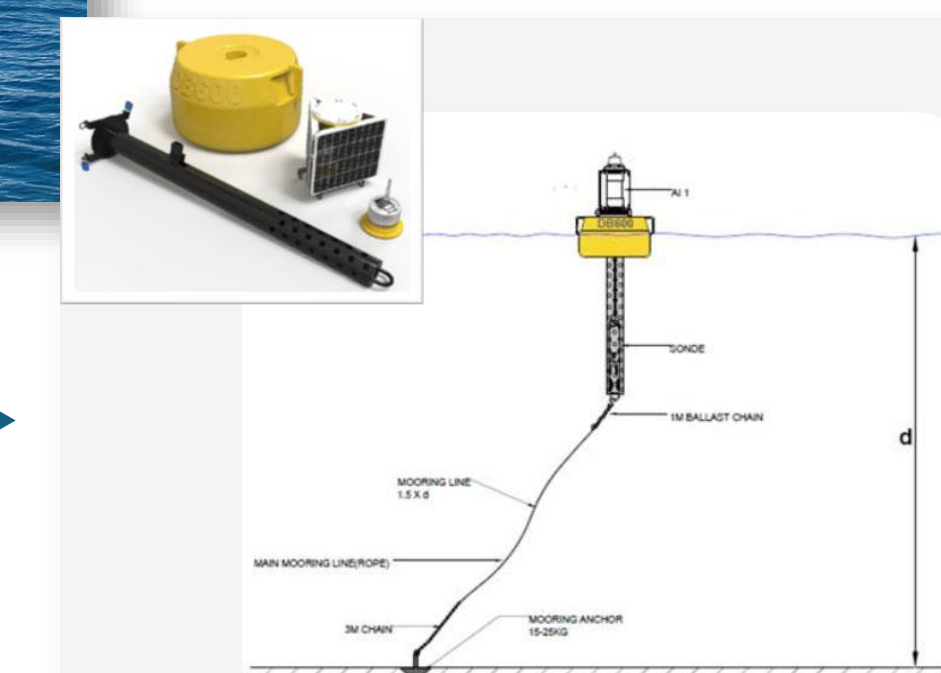
- Sedimentation during dredging and land reclamation  
*Yan' nge rungduq u napan ni yibe kirker e dubchol nge u napan ni yibe burdiy e binaw*
- Improved stormwater management at the Airport and Seaport  
*Ra mo'nog wa'en e raen u shikojo nge gampek*

### Best Management Practices

#### Rogon ni Ngan Murwel Ni Thaabi Bfel



**Silt Curtains**  
*Nug ni ma dugliy e aeraer*



**Turbidity Monitors**  
*Msin ni ma foleg gelngin e aeraer ko day*



Your Voice Matters! Submit comments to [www.nepa.navy.mil/yapeis](http://www.nepa.navy.mil/yapeis)

Laniyan ea yoor ea ba gaa' fan! Ra baa ea tin ni gabadag ni ngan nang fa baa' ea duwer rom mag pii ko [www.nepa.navy.mil/yapeis](http://www.nepa.navy.mil/yapeis)



# Air Quality Rogone Nifeng

## Air Emissions Sources

### *Pinen Ni Ra I Thilyeg Rogone Nifeng*



◀ **Concrete and Asphalt Batch Plants**  
*Ngin ni yibe aruy e simen nge pich riq*

**Construction Equipment and Fugitive Dust** ▶  
*Tal'ne Murwel nge Ab Ni Ma Miit Riq*



◀ **Military aircraft and vessels**  
*Skuki ko Salthaw*



## Compliance and Potential Impacts

### *Rogoni yibe fol ko motochiyal nge yagan e murwel ni yibe susun nag*

Adhering to the Environmental SOP developed by US DoW, FSM, and Yap State, the Proposed Action will comply with substantive similar standards from Yap Ambient Air Quality Standards and U.S. Clean Air Act.

*Re Proposed Action (Rogone murwel ni be athpeg e DoW) neq e ra fol ko motochiyal u tanggin e Yap Ambient Air Quality Standard nge U.S. Clean Air Act ni bod rogoni kan yoloy marngaagen ko Environmental SOP. Environmental SOP e ni yoloy nga tomren ni ke puruy nag e U.S. DoW, nge Am nu FSM, nge Am nu Waab rogone murwel ni ngan taq.*

## Best Management Practices

### *Rogone ni Ngan Murwel ni Thaabi Bfel*

Environmental compliance plan (ECP) will address substantive standards per COFA, BMPs and applicable mitigation

*Environmental Compliance Plan (ECP) e bay e motochiyal riq ni be fol ko motochiyol u tanggine COFA, BMP nge pinen ni btuuf ni ngan taq talpen ya rayog ni ra kireb fa thil*



◀ **Watering and Dust Control**  
*Ra un pag e raen ni nge lich nag e ab u fithike nifeng*



◀ **Vehicle Emissions Reductions**  
*Nge mus fna buchuuw e emission ko caro*



Your Voice Matters! Submit comments to [www.nepa.navy.mil/yapeis](http://www.nepa.navy.mil/yapeis)

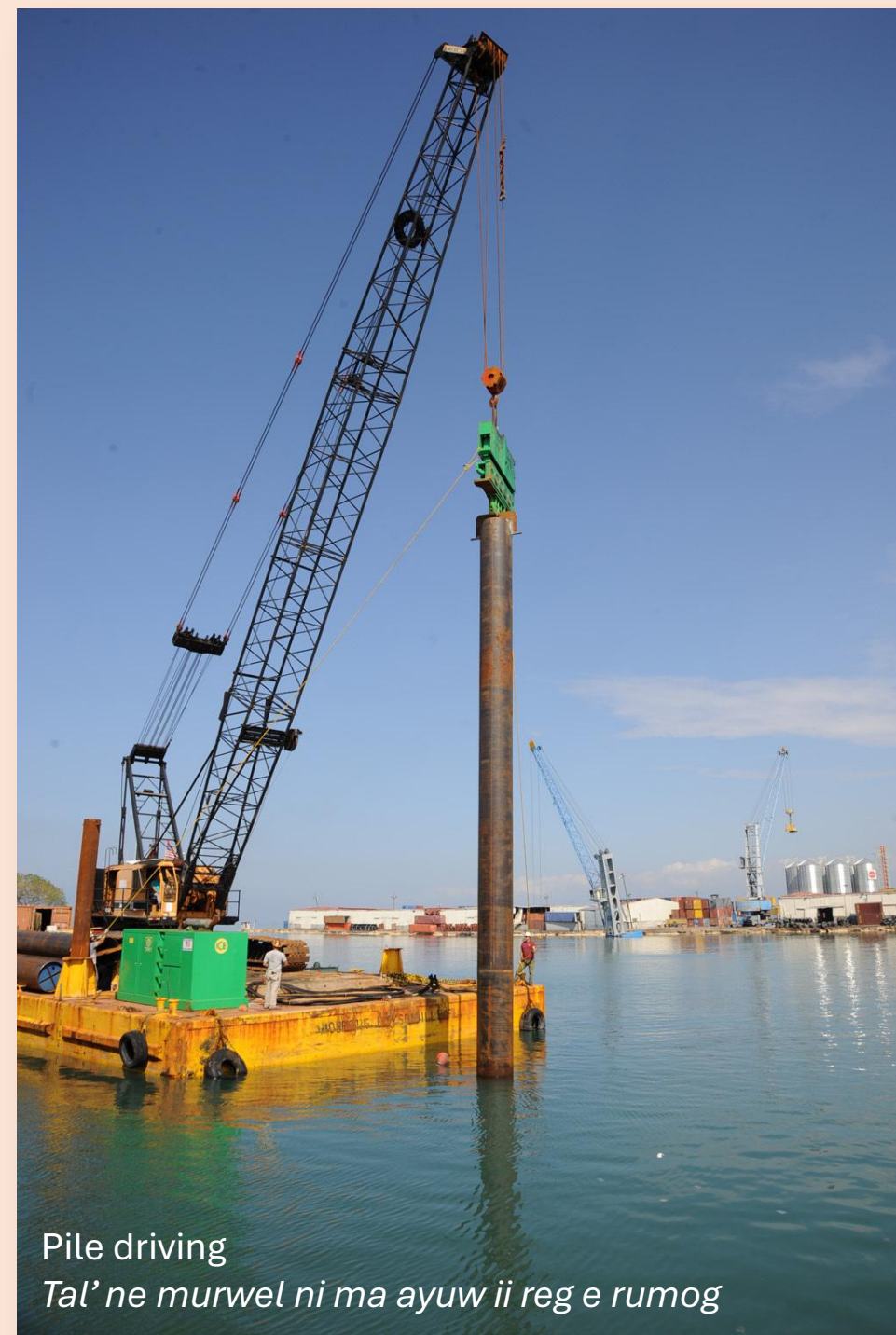
Laniyan ea yoor ea ba gaa' fan! Ra baa ea tin ni gabadag ni ngan nang fa baa' ea duwer rom mag pii ko [www.nepa.navy.mil/yapeis](http://www.nepa.navy.mil/yapeis)



# Noise

## Gaangin Lingan e Murwel

### Construction Noise Sources *Lingan e Murwel*



- Possible temporary disturbances to schools, churches, homes, & businesses closest to the construction sites  
*Rayog ni ra taw lingan e murwel ko skul, galasia, tabinaw, nge business ni ba chuchugur ko ggin ni yibe murwel riq*
- Best management practices will reduce impacts  
*Baa rogone murwel ni kan dugliy ni nge mus fna achig thibngin*
- No risk of permanent hearing damage  
*Gaangin lingan e murwel e dabi bling nag e girdii*

### Noise Levels

<b>F-35 Fighter Jet</b> <i>Skuki ko salthaw</i> 110-120 dBA (L <sub>max</sub> at 1,000 ft AGL)	
<b>C-17 Cargo Plane</b> <i>Skuki Ni ma fek e chugum ko salthaw</i> 85-90 dBA (L <sub>max</sub> at 1,000 ft AGL)	
<b>Boeing 737</b> <i>Skuki ni bagaa</i> 78-88 dBA (L <sub>max</sub> at 1,000 ft AGL)	
<b>Jackhammer</b> <i>Amma ni ma blig e simen</i> 95-100 dBA (L <sub>max</sub> at 50 ft)	
<b>Asphalt Batch Plant</b> <i>Ngin ni yibe fleg e pich riq</i> 95-100 dBA (L <sub>max</sub> at 50 ft)	
<b>Dump Truck</b> <i>Dam truck</i> 85-95 dBA (L <sub>max</sub> at 50 ft)	
<b>Motorcycle</b> <i>Otabay</i> 85-95 dBA (L <sub>max</sub> at 50 ft)	
<b>Normal Conversation</b> <i>Girdii ni be sbathin</i> 60-70 dBA (at 3 ft)	
<b>Quiet Rural Environment</b> <i>Arow nge yungi banen nib palog u Donguch</i> 30-40 dBA (ambient)	

dBA = decibels (A-weighted); L<sub>max</sub> = A-weighted sound level; AGL = Above Ground Level; ft = feet



### Training Exercise Noise Sources *Lingan e Training Exercise*



- Temporary disturbances to schools, churches, & homes closest to the airport during exercises  
*Ra taw lingan e training exercises ko school, galasia, nge tabinaw ni ba chuchugur ko ggin ni yibe taa e pii exercises neq riq*
- Best management practices can reduce impacts  
*Baa rogone murwel ni kan dugliy ni nge mus fna achig thibngin*
- No risk of permanent hearing damage  
*Gaangin ii lingan e training exercises e dabi bling nag e girdii*

All photos from: <https://www.dvidshub.net/>



Your Voice Matters! Submit comments to [www.nepa.navy.mil/yapeis](http://www.nepa.navy.mil/yapeis)

Laniyan ea yoor ea ba gaa' fan! Ra baa ea tin ni gabadag ni ngan nang fa baa' ea duwer rom mag pii ko [www.nepa.navy.mil/yapeis](http://www.nepa.navy.mil/yapeis)



# Community Impacts

## Rogon Rogon nra thilyeg e gachgach u lan binaw

### Construction Work Force *Gothon e Murwel*

- Up to 275 construction employees at peak construction, over 7-year period  
*Rayog ni ra gaman 275 e gothon e murwel ko ngiyal ni ke mus fana atyow e murwel u daken medilip e duw*
- Job opportunities for FSM and Yap workers and subcontractors  
*Bay e murwel ni rayog ni nge rrin e girdii nu FSM nge Waab*

### Public Services & Medical *Pinen nib fan ko girdii ni gubin, nge taflay*

#### Construction *Murwel*

- On-site housing (“worker camps”) provided for workers  
*Biyang ni ngaii par e gothon e murwel riq ko ngin ni yibe murwel riq*
- Construction contractor provides food, water, utilities, and medical care provided for all workers  
*Chaan ni ir e bagaa ko murwel e ir e nge yag nag ggan e murwel, rran ni ngan fanaa ko murwel ma ngan unum, gamig ni yira fanaa, nge rogone taflay ko gothon e murwel*
- Construction employees will not reduce availability of local services  
*Girdii ni ra yib ni nge murwel e dabi yoyowliiy e piyu rabaa ii murwel u Waab nib fan ko girdii nu Waab*

#### Post-Construction *Tomren e Murwel*

- Minor impacts if temporary housing, meals, or other services are necessary during training exercises  
*Napan e re training exercise ne' ma rayog ni ra t'uf e naun ara yuyang i banen ni ngan par riy, damunmun nge kuboch banen nib ga' fan ko ngiyal nem, machne dabi nuw napan*



### Public Health and Safety

#### *Rogon Salpen e Yafas ko Yoor*

#### Construction *Murwel*

- Workers vaccinated and screened for communicable disease before arrival  
*Gothon e murwel e yira pii e vaccine ngored ma yiro screen nag rad ngan micheg ni dariy e mar ni ma af rorad u'mon ni ngar bad nga Waab*
- Workers have criminal background checks  
*Yira guq ko babyoran gubin e gothon e murwel ko bay e oloboch rorad fa dariy*
- No significant adverse impact on public health and safety  
*Yug dagaariq banen ni ra bucheg e murwel ko rogon e par girdii*

#### Post-Construction *Tomren e Murwel*

- Channel, seaport and airfield improvements will enhance public access, health and safety  
*Rogon ni kan mo'nog nag e dubchol nge shikojo nge gampek e ra muum nag rogone mlekag nge rogone par ko girdii*
- Some aircraft noise during bi-annual training  
*Ra ii madaa lingan e skuki ngalan u napan e training ni yira taq. Laagruw yay ni yira training u lan rebe duw*



### Construction Safety and Operations

#### *Rogone Murwel nib Fel*

- Airport and Seaport open throughout construction  
*Ra par e gampek nge shikojo nib mab u napan e murwel*
- Safety barriers and signs, notifications to operators, strict safety procedures  
*Bay e yoror/fol nge yol (sign) ni nge powiyy e gothon e murwel u rogon ni ngan murwel ni nga dabin maadad*
- Maintain current commercial flight schedule; cargo flights to align with United Airlines schedule  
*Ra par rogone skuki (rran nge ngiyal) ni ma yib nga Waab ni kargon; skuki ko chugum (cargo) e bay ni guu rogon nge gamog ko rogone rran nge ngiyal ni ma yibe United Airlines*



Your Voice Matters! Submit comments to [www.nepa.navy.mil/yapeis](http://www.nepa.navy.mil/yapeis)

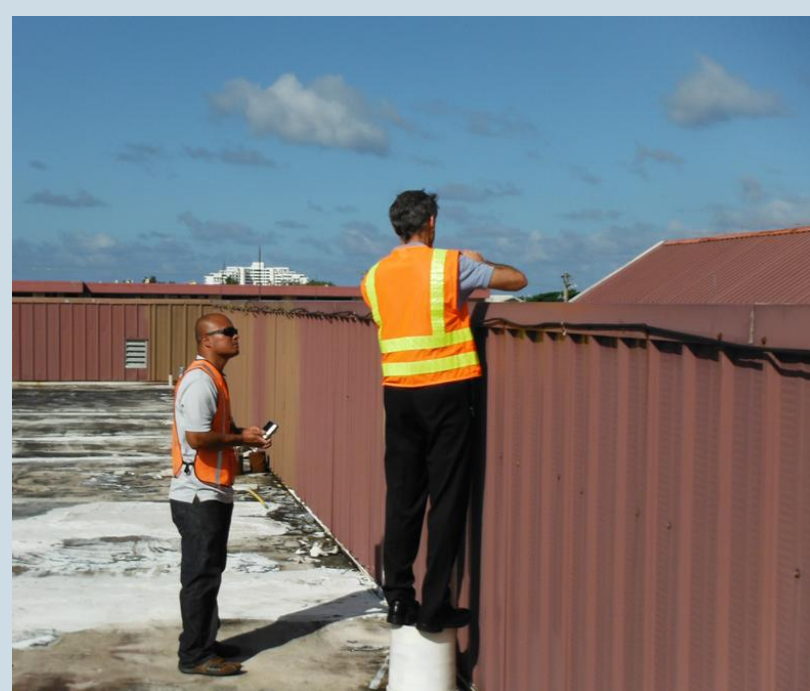
Laniyan ea yoor ea ba gaa' fan! Ra baa ea tin ni gabadag ni ngan nang fa baa' ea duwer rom mag pii ko [www.nepa.navy.mil/yapeis](http://www.nepa.navy.mil/yapeis)



# Infrastructure and Utilities

## Pinnen ni baa ni kan toy & Nge pinen ni baa ni yibe fanaa

- **Environmental compliance plan (ECP) will address substantive standards per COFA, BMPs and applicable mitigation**  
*Ra fol e Environment Compliance Plan (ECP) ko motochiyal u tanggin e COFA, BMPs, nge tin e motochiyal ni ma gagiyeq nag rogon ii gonopiy e nen ni ra kireb nag e murwel ni ngan taq*
- **Close coordination with Yap State utility and port managers**  
*Ra un mgo puruy ngake girdii ko nib gaa ko raen nge gamig nge ngake girdii nib gaa ko gampek nge shikojo*
- **Contractor will have backup plans during drought, other natural disasters or system outages to ensure no strain on local services**  
*Re rabaq ii girdii ni ra murwel (contractor) e ra taq talpen e uyngal, yokoq, fa boch e banen ni rayog ni ra buch ni ra kireb nag rogone murwel ni yibe taq u Waab*
- **Local utility providers will be compensated for any services used during construction and post-construction training**  
*Yira pii pulwon e raen nge gamig ni yira fna u napan nge tomren e murwel*
- **Public utility capacity will not be negatively impacted**  
*Dabi magawon nage murwel rogone raen nge gamig ni be fna e girdii ni Waab*



### Construction Impacts

#### Yagagan e Murwel

- **Potable water** at batch plants and worker camps  
*Raen ni rayog ii unum ni nge moq ko batch plants nge ngin ni nge par e girdii riq*
- **Non-potable water** at construction sites  
*Raen ni dani ma unum ni nge moq ko ngin ni yibe murwel riq*
- **Wastewater** at worker camps  
*Raen nib alit ko ngin ni be par e girdii riq*
- **Electrical** at batch plants, worker camps  
*Gamig ko batch plants nge ngin ni nge par e girdii riq*
- **Solid waste** at worker camps and from construction sites  
*Chabngey ko ngin ni nge par e girdii riq nge ngin ni yibe murwel riq*
  - Demolition materials reused or shipped off-island  
*Chabngen e pinen ni yibe buthug ni kan fnaa biyay fa ngan pii nga wuruq e nam*
  - Green waste composted/reused  
*Dow ni ke yib ko bmiit e pan fa gakiy ni nge mang doq fa ngukun fnaa biyay nga reb e banen*
  - No hazardous material disposal on island  
*Dow/chabngey ni yiraa madad ngaq fa ni mar ngaq e dariy e ngin ni yima n'eg ngaq u daken e nam*



### Post-Construction Benefits

#### Falngin e Murwel ni Faanra Mugul'

- Modernized Airport and Seaport infrastructure  
*Ra biech e shikojo nge gampek nge gubin banen u daken*
- Improved roadway connection between Airport and Seaport  
*Ra fel' e kanawo ni yan u shikojo nga gampek*
- Enhanced defense capabilities  
*Ra yoor rogon ni rayog ni ngii rin e salthaw e murwel rok ni matnag rok u Waab*
- Improved stormwater management and water quality  
*Ra fel' rogon ni ngan muruwiliy e raen u Waab – tin ni yibe fanaa nge tin ni be yan u buut, u dow ngo daken e kanawo*



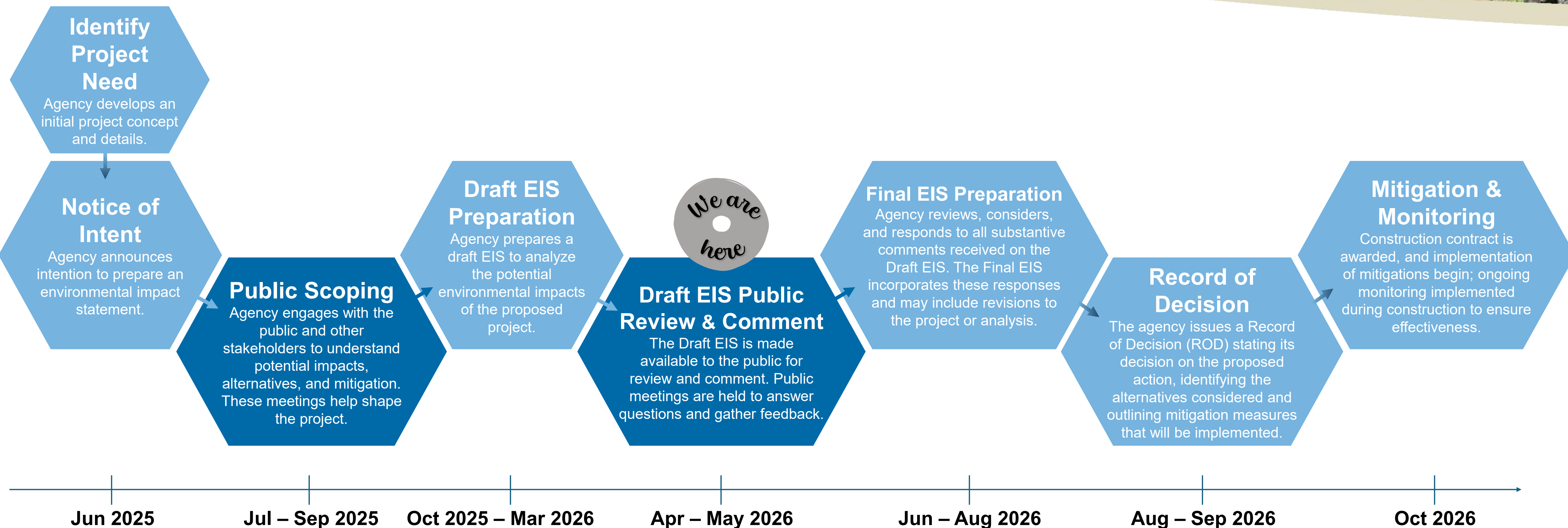
Your Voice Matters! Submit comments to [www.nepa.navy.mil/yapeis](http://www.nepa.navy.mil/yapeis)

Laniyan ea yoor ea ba gaa' fan! Ra baa ea tin ni gabadag ni ngan nang fa baa' ea duwer rom mag pii ko [www.nepa.navy.mil/yapeis](http://www.nepa.navy.mil/yapeis)



# Environmental Process

## Rogone ayweg ea yafas u maday nga arow



### What is an EIS?

An Environmental Impact Statement is a document that evaluates the potential impacts of a proposed project.

### Mange raa EIS nea'?

Rea EIS nea' ea bangi babiyor ni ra ayuw ni ngan nang rogon ea marwel ni ngan tay man nang rogon ni ngan achig nage mogothgoth ni ngan tay ko napan ea pii marwel ney.



- Phases of public involvement. Buguruy ea marwel ko yo'or u tabang.
- Phases of internal government document development. Buguruy ea marwel ko am ni ngan faleg ea babiyor nge yaram.



Your Voice Matters! Submit comments to [www.nepa.navy.mil/yapeis](http://www.nepa.navy.mil/yapeis)

Laniyan ea yoor ea ba gaa' fan! Ra baa ea tin ni gabadag ni ngan nang fa baa' ea duwer rom mag pii ko [www.nepa.navy.mil/yapeis](http://www.nepa.navy.mil/yapeis)

